

SQUARES



DUBAI DMCC



Investment in Fine Art at One Number

Q - Factor

Q shows you the fair value of your artwork.
Compared to a reference value based on a vast
dataset of prices and qualities of related
artwork, generated by **AI**



SQARES MARKET

<https://squares.com/token.html#3:5>

Pablo Picasso

Version PRGN000
S NFT
Token ID: 0000005



0xe61ff3372ee65510506529b4386e70e61A60233b6
Smt.ae/?/3:5

Bacchanale
1954

Title:	Bacchanale
Type:	Edition Work
Year:	1954
Scale:	49x60 cm
Size:	2.940 cm ²

Pablo Picasso

Price: 26.000 \$

Q = 8,84

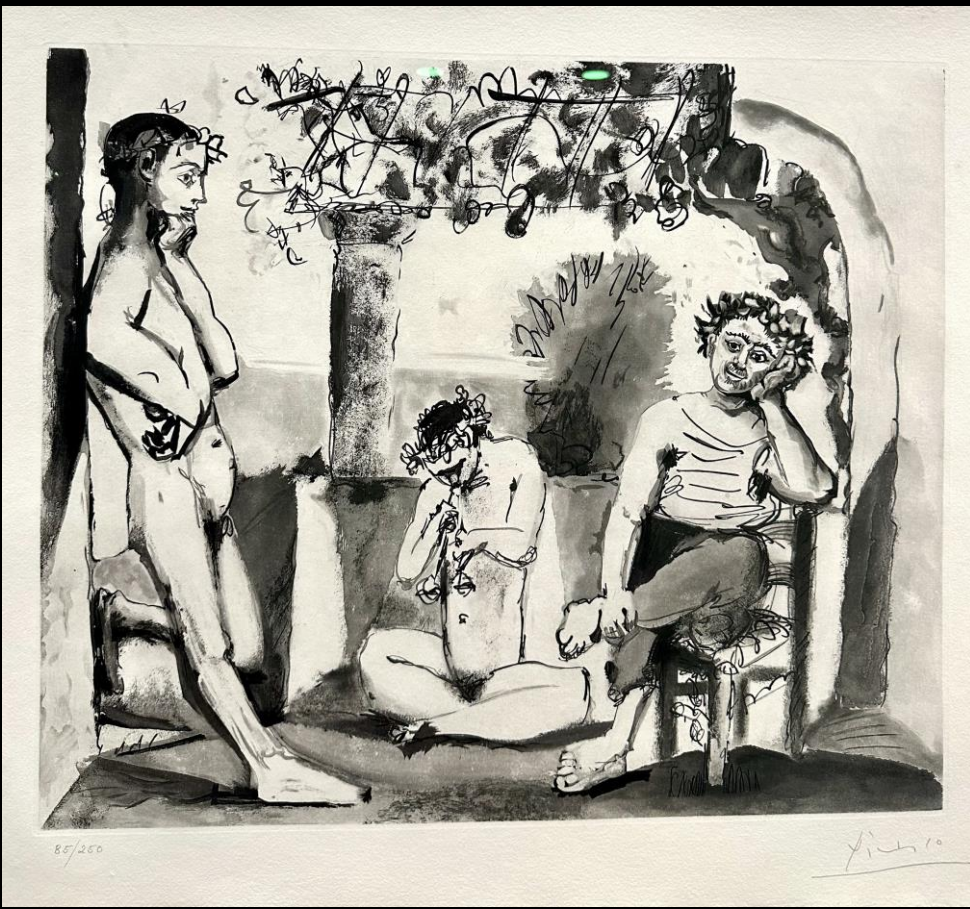
Size: 2.940 cm²

Transaction Data of Comparable Artworks

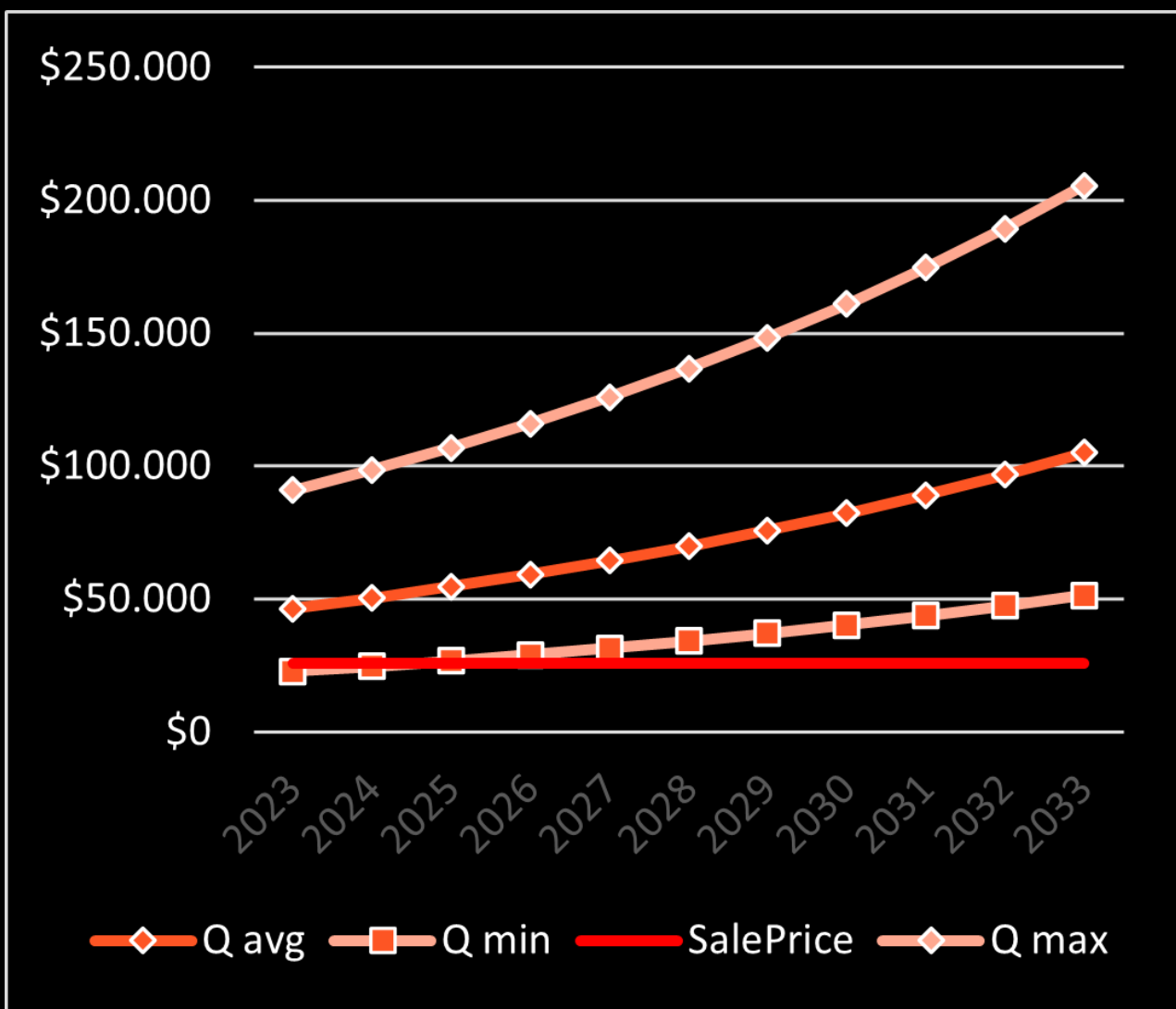
	Q-Factor	Price at Q
AVERAGE Q 2022	15.79	46.422 \$
Q Max .125 2022	30.91	90.875 \$
Q Min .125 2022	7.73	22.726 \$
Top 0.95 Q 2022	76,56	225.086 \$

Overall Market Data for the Artist

Market Volume	6.98 Billion \$
Highest Priced Work	179 Million \$
Global Ranking Place	Place 2



Value Prognosis



Q avg **Q min** **Q max**
\$ 104.961 **\$ 51.384** **\$ 205.468**



SQARES MARKET

<https://squares.com/token.html#3:7>

Pablo Picasso

Version PRGN000
Token ID: 0000007



0xe6bfff332ae65510506529b4386e70e61a60233b6
Snt.ae/?/3:7

Jeux de Gladiateurs
1968

Title:	Jeux de gladiateurs
Type:	Edition Work
Year:	1969
Scale:	35x30 cm
Size:	1.050 cm ²

Pablo Picasso

Price: 12.000 \$

Q = 11,42

Size: 1.050 cm²

Transaction Data of Comparable Artworks

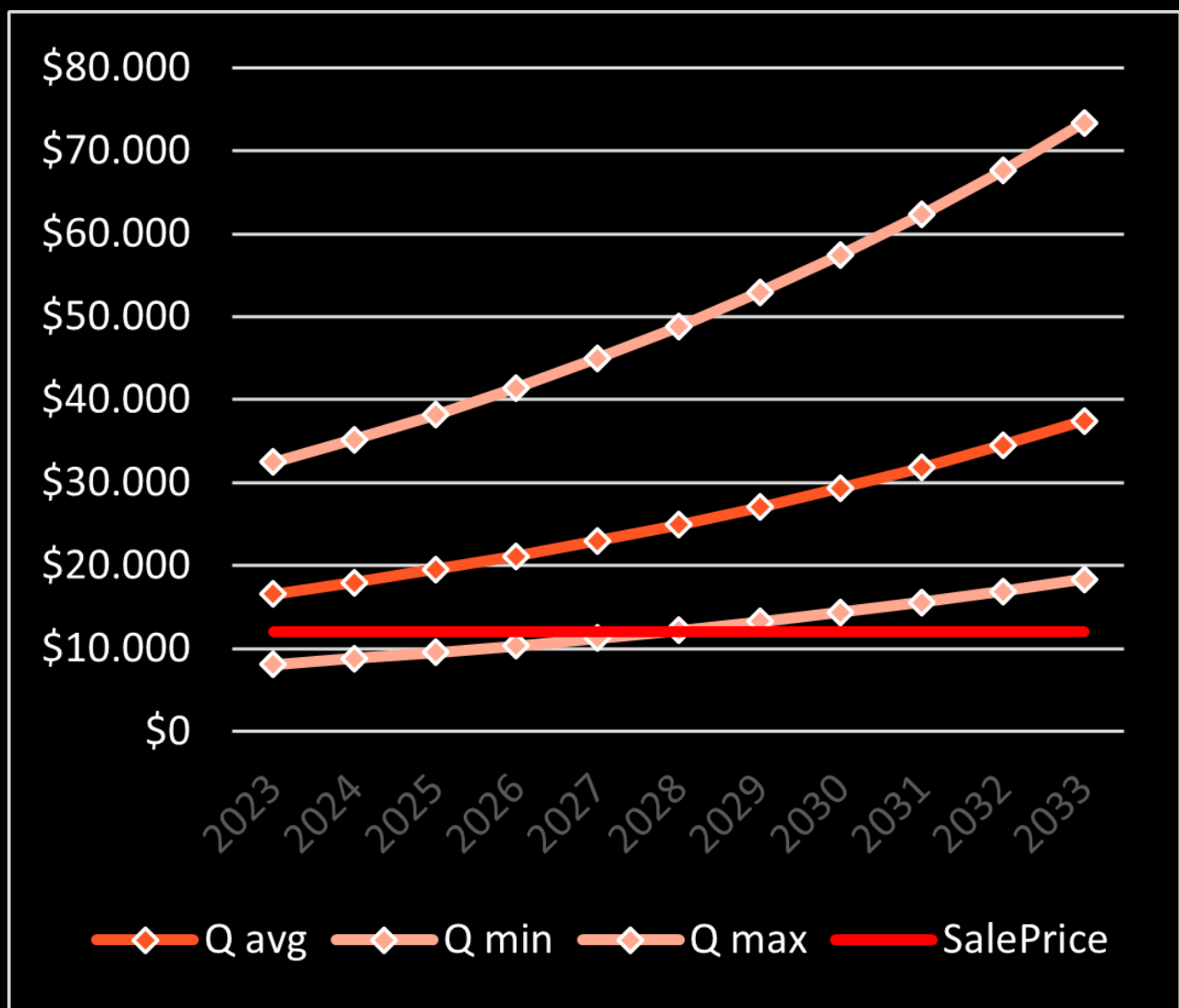
	Q-Factor	Price at Q
AVERAGE Q 2022	15.79	16,579 \$
Q Max .125 2022	30.91	32.455 \$
Q Min .125 2022	7.73	8.116 \$
Top 0.95 Q 2022	76,56	80.388 \$

Overall Market Data for the Artist

Market Volume	6.98 Billion \$
Highest Priced Work	179 Million \$
Global Ranking Place	Place 2



Value Prognosis



Q avg **Q min** **Q max**
\$ 37.486 **\$ 18.351** **\$ 73.381**



SQARES MARKET

<https://squares.com/token.html#3:3>

Salvador Dali

Version PRGN000
S NFT
Token ID: 0000003



0xebfHF332ae65510506529b4386e70e61A60233b6
Sntf.ae/?/3:3

Femme à genoux
1969

Title:	Femme à genoux
Type:	Edition Work
Year:	1969
Scale:	28x38 cm
Size:	1.064 cm ²

Salvador Dali

Price: 4.000 \$

Q = 3,75

Size: 1.064 cm²

Transaction Data of Comparable Artworks

	Q-Factor	Price at Q
AVERAGE Q 2022	3,70	7.803 \$
Q Max .125 2022	7,56	8.043 \$
Q Min .125 2022	1,89	2.010 \$
Top 0.95 Q 2022	43.91	46.720 \$

Overall Market Data for the Artist

Market Volume	401 Million \$
Highest Priced Work	21 Million \$
Global Ranking Place	Place 156



Value Prognosis



Q avg **Q min** **Q max**
\$ 8.901 **\$ 4.547** **\$ 18.187**



Q-Factor – Explained

$$Q = \text{Price \$} / \text{Size cm}^2$$

You just divide the price by the Size

Q – for your Artwork

|

Set in relation to

|

**Q – Average off all comparable
Artwork Prices**

$$Q = \left(\frac{\sum \text{Price \$}}{\sum \text{Size cm}^2} \right) \times f(w_{type}, w_{year}, w_{artist}, w_{acc}, w_{exh}, w_{qual})$$

The reference Q is calculated, based on all available past market prices of comparable artworks for each period. Qualitative factor impacts are represented by weights and calculated on deep learning algorithms of vast data sets by AI.

Q-Factor Values – Explained

Q-FACTOR: Value in \$ / cm²

SIZE: Length x width in cm²

PRICE: Actual offered price in \$

AVERAGE Q 2022

The average Q-Factor calculated on the dataset is measured with weight factors for a specific period, annually. Each Q is discrete for one period, one artist, and one work category. Comparing the Q with the Q from a past period provides a substantial analysis of the development of the inner value of the specific category by one artist.

Q Max .125 2022

The upper boundary for the Q factor by artist, category, and period is given, under which .875 of the values are located. This forms a corridor that contains .75 of all values.

Q Min .125 2022

The lower boundary for the Q factor by artist, category, and period is given, above which .875 of the values are located.

Top 0.95 Q 2022

The value for Q above which .05 of values are located indicates the probability and magnitude of values that deviate significantly from the average. It serves as a measure for positive dispersion.

Average Yearly Growth Rate

8,5% CAGR. Based on the data of the most widely used reference index: Mei Moses Art Indices: <https://www.sothebys.com/smm>



You Don't Know How it Works but you want to Invest in Fine Art

Here is a Link to one of our Education Partners



<https://ares-projects.io/book.html>

SQUARES



DUBAI DMCC